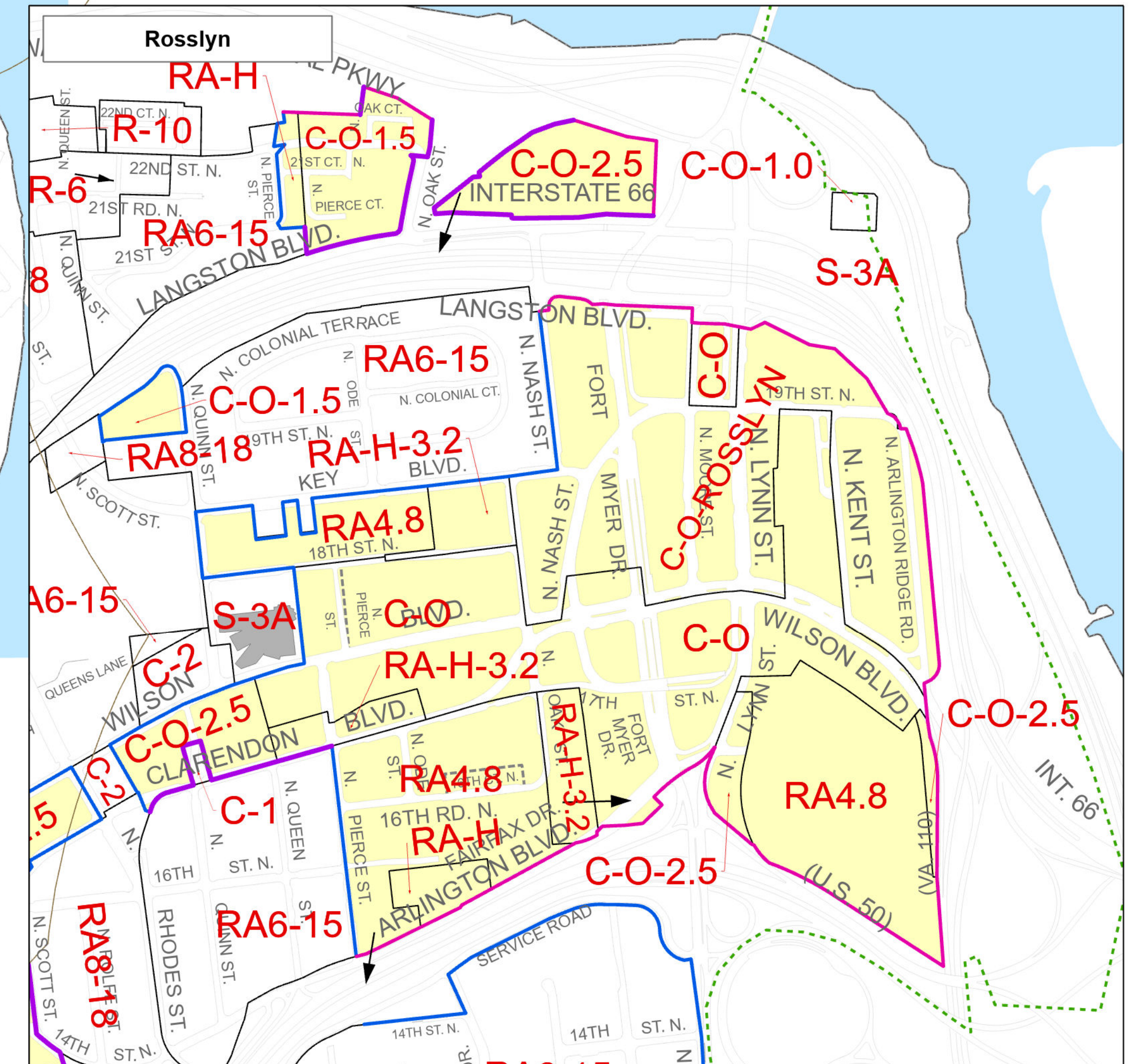
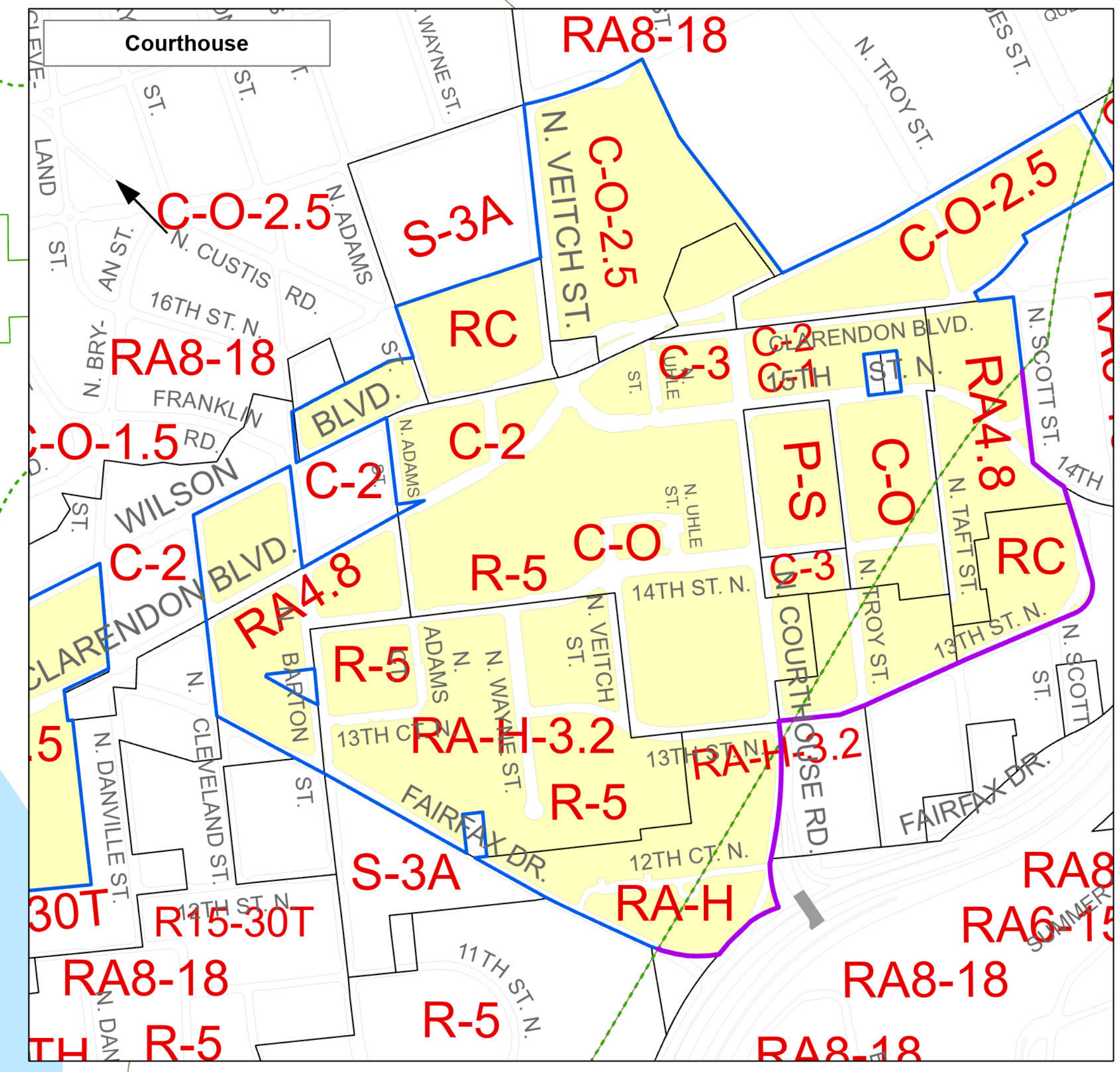
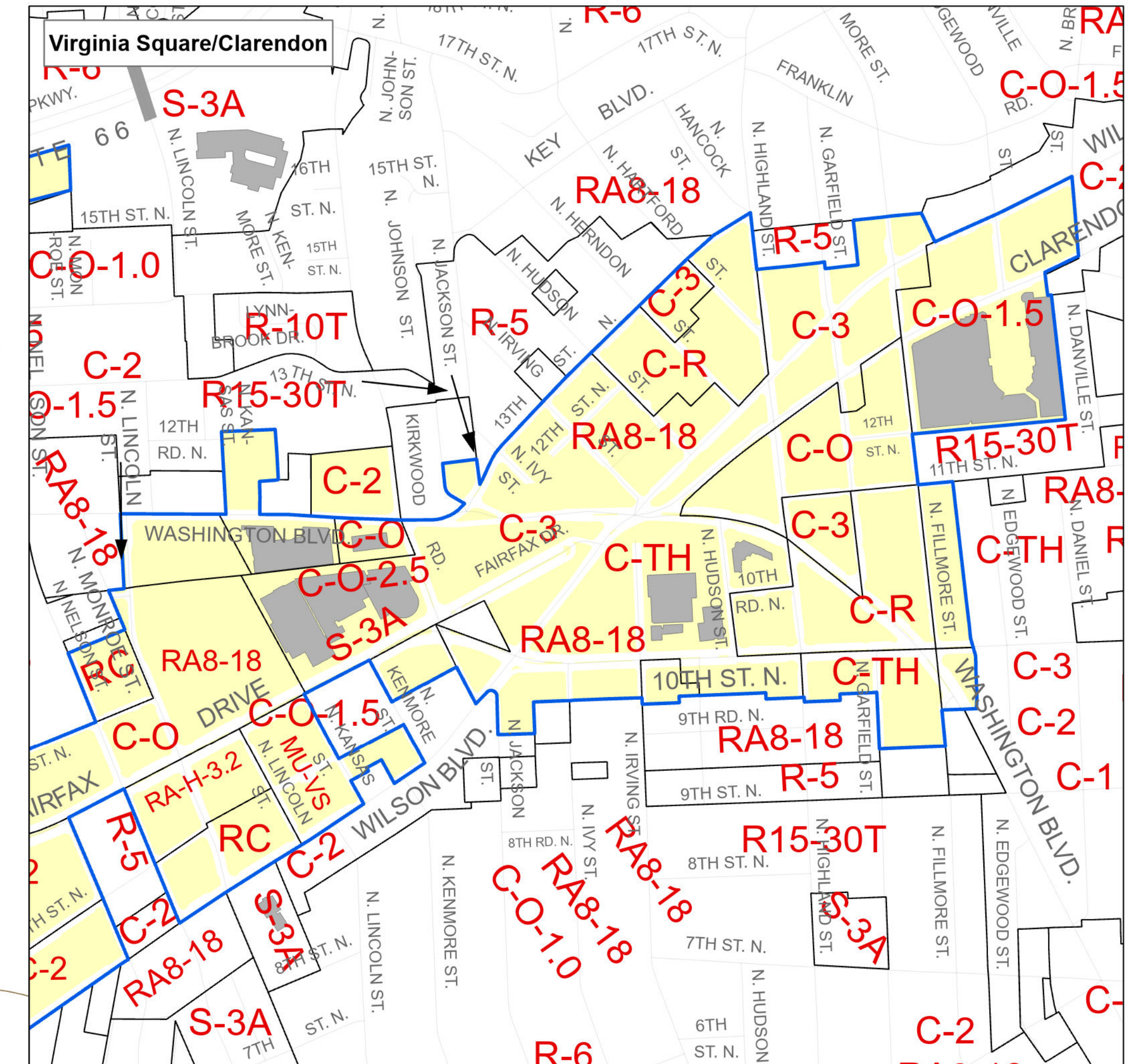
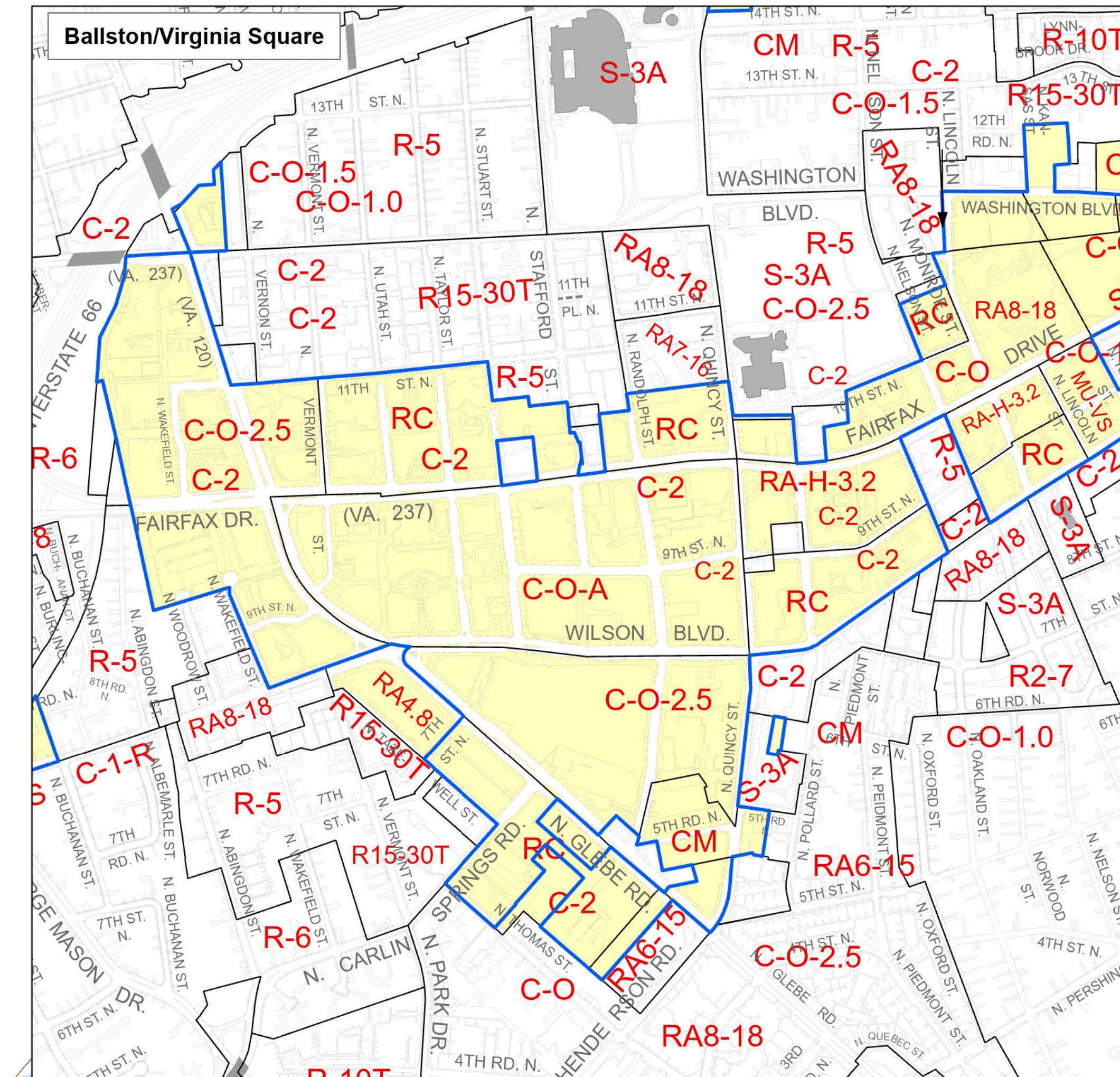
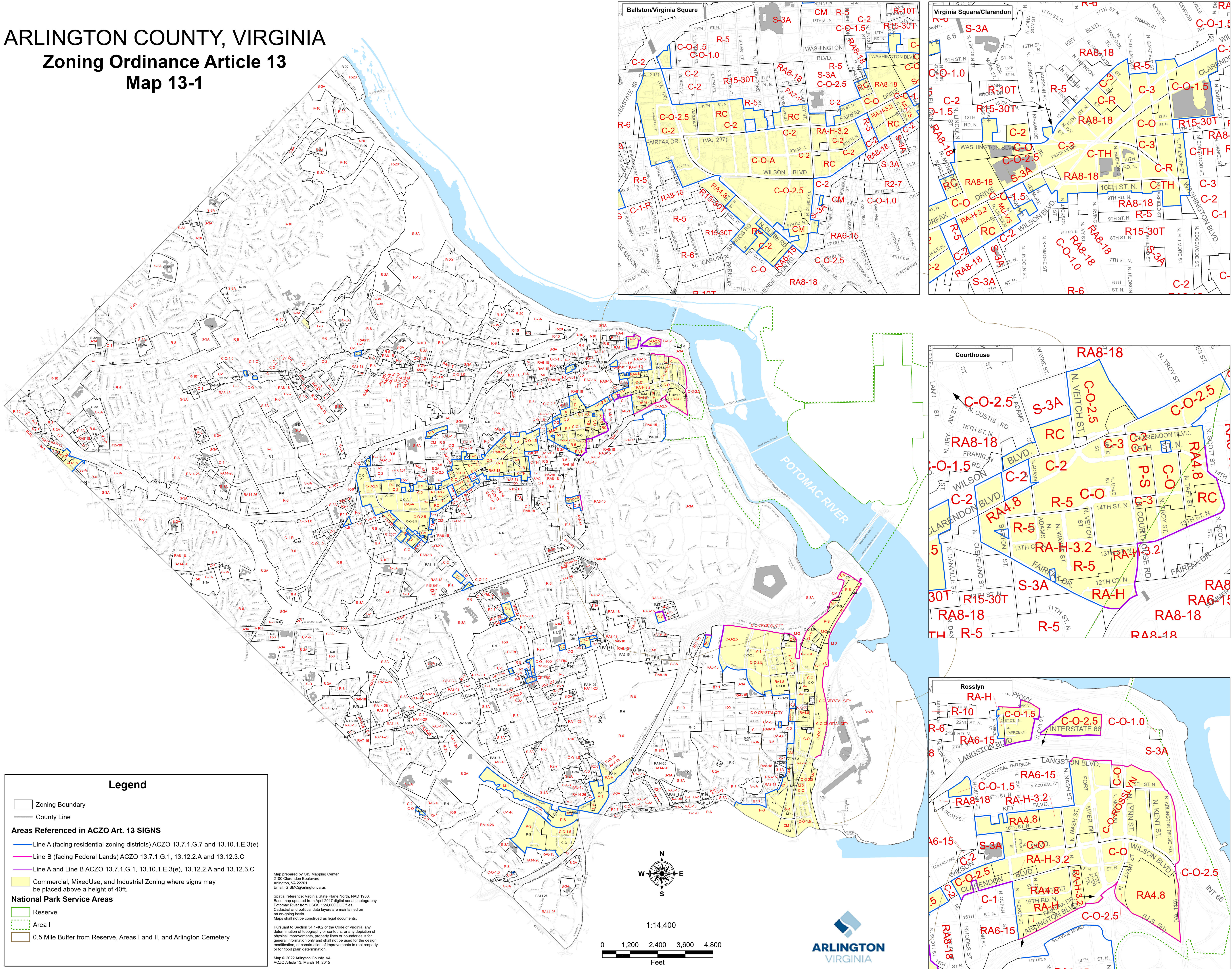


ARLINGTON COUNTY, VIRGINIA

Zoning Ordinance Article 13

Map 13-1



Legend

- Zoning Boundary
- County Line

Areas Referenced in ACZO Art. 13 SIGNS

- Line A (facing residential zoning districts) ACZO 13.7.1.G.7 and 13.10.1.E.3(e)
- Line B (facing Federal Lands) ACZO 13.7.1.G.1, 13.12.2.A and 13.12.3.C
- Line A and Line B ACZO 13.7.1.G.1, 13.10.1.E.3(e), 13.12.2.A and 13.12.3.C

National Park Service Areas

- Reserve
- Area I
- 0.5 Mile Buffer from Reserve, Areas I and II, and Arlington Cemetery

Map prepared by GIS Mapping Center
2100 Clarendon Boulevard
Arlington, VA 22201
Email: GISMC@arlingtonva.us

Spatial reference: Virginia State Plane North, NAD 1983.
Base map updated from April 2017 digital aerial photography.
Potomac River from USGS 1:24,000 DLG files.
Cadastral and political data layers are maintained on an on-going basis.
Maps shall not be construed as legal documents.

Pursuant to Section 54.1-402 of the Code of Virginia, any determination of topography or contours, or any depiction of physical improvements, property lines or boundaries is for general information only and shall not be used for the design, modification, or construction of improvements to real property or for flood plain determination.

Map © 2022 Arlington County, VA
ACZO Article 13, March 14, 2015

N
E
S
W

1:14,400

0 1,200 2,400 3,600 4,800
Feet

