

ARLINGTON COUNTY, VIRGINIA

DEPARTMENT OF PUBLIC WORKS

ENGINEERING DIVISION

SURVEY SECTION

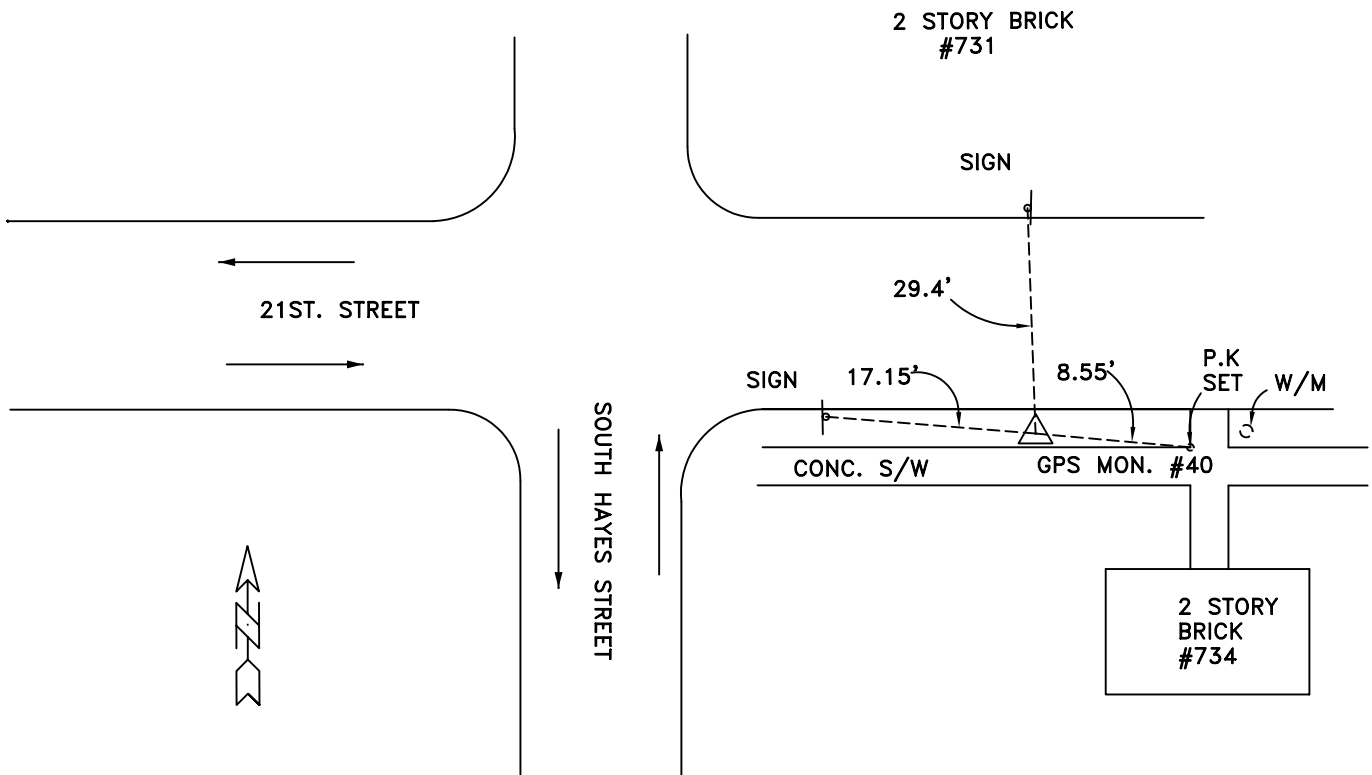
#1 COURTHOUSE PLAZA, SUITE 813
2100 CLARENDON BOULEVARD
ARLINGTON, VIRGINIA 22201
(703) 228-3686 · FAX (703) 228-3606

<i>GEODETIC CONTROL SHEET</i> <i>Arlington County Control</i>			<i>STATE PLANE: VA STATE GRID NORTH</i> <i>DATUM: NAD 83 (93)</i>
<i>COUNTY</i> <i>Arlington</i>	<i>NAME OF STATION</i> <i>40</i>	<i>YEAR</i> <i>2000</i>	<i>MAP PROJECTION: Lambert</i>
<i>N: 6997570.539</i>	<i>E: 11893181.734</i>	<i>Lat: 38° 51' 17.27789"N</i>	<i>Lon: 77° 03' 33.38774"W</i>
<i>SCALE FACTOR: 0.99995694</i>	<i>ELEV. FACTOR: 0.99999749</i>	<i>CONV. ANGLE: 00° 53' 57.057"</i>	<i>DATE: June 30, 2000</i>
<i>VERTICAL DATUM: NAVD 88</i>	<i>COMBINED FACTOR: 0.99995946</i>	<i>HORIZONTAL ORDER: Second Class 1*</i>	
<i>ELEV. (FT): 52.4'</i>			
<i>VERT. ORDER: GPS</i>			

TO REACH:

The station is a standard Arlington County brass disk set in concrete and is located in the southeast quadrant of the intersection of 21st Street and South Hayes Street. See sketch for a more detailed location.

SKETCH: NOT TO SCALE



* HORIZONTAL ORDER DOES NOT DENOTE CONFORMANCE TO FGCS/NGS STANDARDS OR SPECIFICATIONS