

# ARLINGTON COUNTY, VIRGINIA

DEPARTMENT OF PUBLIC WORKS

ENGINEERING DIVISION

SURVEY SECTION

#1 COURTHOUSE PLAZA, SUITE 813

2100 CLARENDON BOULEVARD

ARLINGTON, VIRGINIA 22201

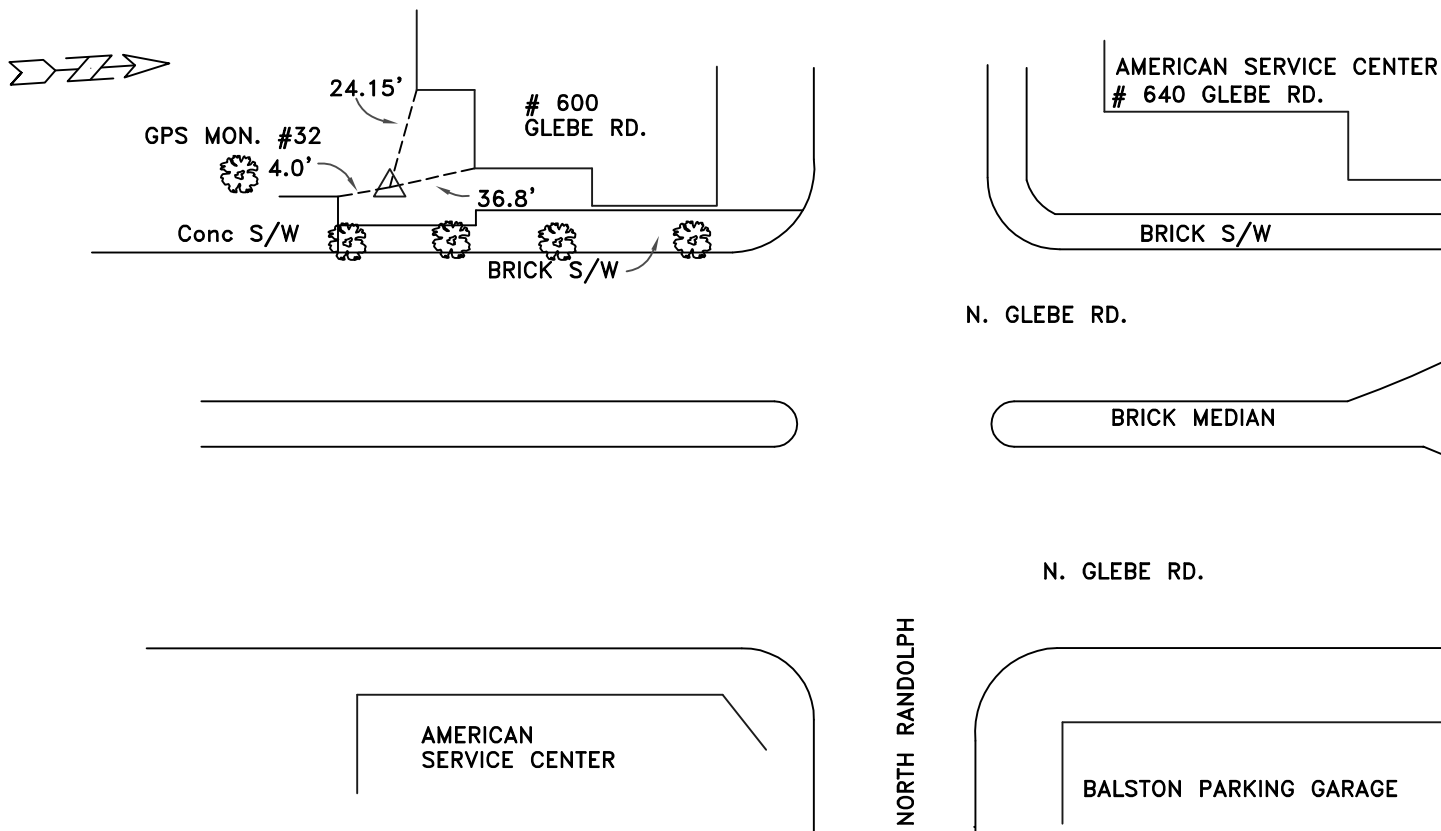
(703) 228-3686 · FAX (703) 228-3606

<i>GEODETTIC CONTROL SHEET</i>		<i>STATE PLANE: VA STATE GRID NORTH</i>	
<i>Arlington County Control</i>		<i>DATUM: NAD 83 (93)</i>	
<i>COUNTY</i>	<i>NAME OF STATION</i>	<i>YEAR</i>	<i>MAP PROJECTION: Lambert</i>
<i>Arlington</i>	<i>BN032</i>	<i>2000</i>	<i>CONVERSION: US Survey Foot</i>
<i>N: 7005289.920</i>	<i>E: 11878819.588</i>	<i>Lat: 38° 52' 35.76173"N</i>	<i>Lon: 77° 06' 33.44891"W</i>
<i>SCALE FACTOR: 0.99995858</i>	<i>ELEV. FACTOR: 0.99998705</i>	<i>CONV. ANGLE: 00° 52' 04.678"</i>	<i>DATE: June 30, 2000</i>
<i>VERTICAL DATUM: NAVD 88</i>	<i>COMBINED FACTOR: 0.999945630</i>		<i>REVISED DATE: APRIL 30, 2008</i>
<i>ELEV. (FT): 270.70'</i>	<i>HORIZONTAL ORDER: Second Class 1 *</i>		
<i>VERT. ORDER: THIRD</i>			

*TO REACH:*

*The station is a standard Arlington County brass disk set in concrete and is located in the southwest quadrant of the intersection of N. Glebe Road and North Randolph Street. See sketch for a more detailed location.*

*SKETCH: NOT TO SCALE*



*\* HORIZONTAL ORDER DOES NOT DENOTE CONFORMANCE TO FGCS/NGS STANDARDS OR SPECIFICATIONS*